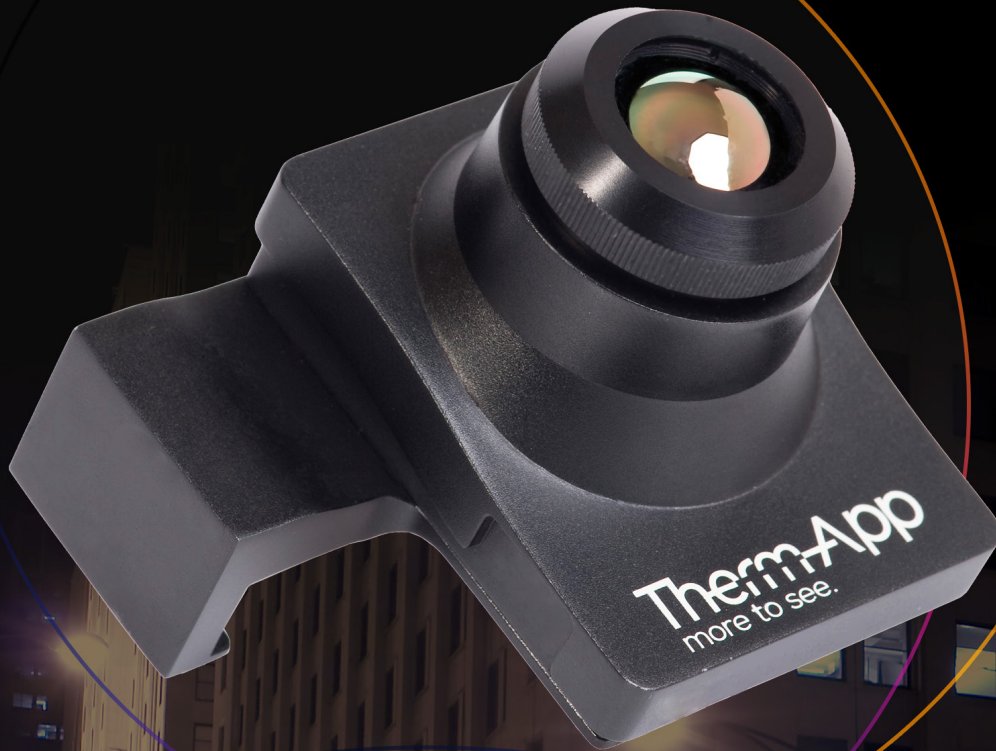


**Therm-App**  
more to see.

**ANDROID THERMAL  
IMAGING DEVICE**

**SURVEILLANCE**



**TARGET DETECTION**

**SEARCH & RESCUE**

**THREAT IDENTIFICATION**



# Unparalleled combination of excellent performance and affordability in a portable, lightweight device

## Why Stay in the Dark?

Therm-App™ improves effectiveness in the field, providing clear images in total darkness — delivering mission critical information which can save lives. The compact and lightweight camera with interchangeable lenses enables users to record and immediately share high-quality thermal images and videos. Connecting to most Android smartphones, it offers superb image quality and low power consumption.



### Long range detection

Detect human size targets up to 500m  
Detect vehicle size targets up to 1,500m



### Interchangeable Lenses

Therm-App™ offers a variety of lenses to match specific operational needs. Currently available: 6.8/13/19/35mm lens options.



### Modular

Compatible with head-mounts, tripods, handles and other standard 1/4"-20 mounts.



# Improve situational awareness and enhance safety with long-range detection and recognition capabilities.



## Security

See the unseen while on routine perimeter patrol, securing a facility, or identifying potential threats in dark or badly lit areas. It's easier to control and secure a perimeter, by obtaining clear images of people, animals, or vehicles at the scene.



## Law Enforcement

Improve situational awareness and enhance safety while on patrol, responding to distress calls, exiting patrol vehicles, and entering buildings. Identify perpetrators trying to avoid detection or fleeing the scene.



## Wildlife

Obtain a clear view of animals in the wild, irrespective of lighting or weather conditions— through high grass, dense brush, or forested areas.



## Search and Rescue

Locate injured or unconscious people on land or in water, in any weather or environmental conditions such as fog or smoke. Detect signs of life even in thick foliage or wooded areas, day or night.



# Therm-App™ Technical Specifications

Smartphone	
Minimal Requirements	Android 4.1 and above, supporting USB OTG
Hardware	
Imager	384 x 288 microbolometer LWIR 7.5 -14um
Optics	6.8mm lens (55° x 41°) 13mm lens (29° x 22°) 19mm lens (19° x 14°) 35mm lens (11° x 8°)
Focus	Manual, 0.2m to infinity
Frame Rate	8.7Hz
Weight	138 grams / 4.86 ounces
Size	55 x 65 x 40mm (2.16 x 2.55 x 1.57in)
Operating Temperature	-10°C to +50°C (14°F to +122°F)
Storage Temperature	-20°C to +50°C (-4°F to +122°F)
Power Supply	No battery, 5V over USB OTG cable, power consumption < 0.5W
Certifications	CE, FCC, RoHS
Encapsulation	IP54
Mount/Handle	Ergonomic handle, using 1/4"-20 standard tripod mount
Device Attachment	Clip-on for smartphone (5 -10cm span)

Measurement	
Resolution	384 x 288 pixels (>110,000 pixels )
Accuracy	+/- 3°C or 3% (@25°C)
Sensitivity	NETD <0.07°C
Temperature Range Calibration	5 – 90 °C
Software	
Viewing Modes	<ul style="list-style-type: none"> <li>Night Vision</li> <li>Thermography (Basic)</li> </ul>
Output	Video & Audio (h.264), Snapshot
Instant Share	Email, SMS
Android Share	Via media gallery
Color Palettes	Hot White / Hot Black / Iron / Rainbow / Grey / Vivid
Zoom	Continuous digital zoom using touchscreen
Software and feature updates	Yes (via Google Play)
Maintenance	Bad pixel repair utility

At night, or in poor visibility conditions, Therm-App™ gives you the full picture.